

Project Linus

September 2010

Phoenix/West Valley, AZ Chapter

Phoenix/West Valley Chapter

Total Blankets Delivered

15,066

Since March 2005

New West Valley Coordinator

My name is Eve Buck and I recently took over the coordinator position of the West Valley Chapter. Many thanks to Kathy Atha for a job very well done. Kathy started the Chapter in 2005, and helped it grow to be a very successful Chapter. My goal is to increase participation and increase our contribution to the children who are in need of our help in the West Valley.

Pledge-a-thon

In July, we held a Pledge-a-thon. Our wonderful Blanketeers raised money to help the Chapter. The money is used to buy batting, fabric, fleece and yarn. We raised just over \$2,000. Hats off to Sara Graf, who collected \$1,000! Thank you, Sara.

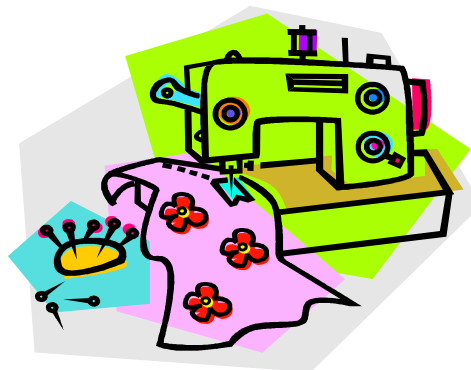
A **BIG** Thank you to the Hasslen Family for shopping, cooking and serving our delicious lunch. Also, thank you to Trish Seidel for arranging with Mimi's, their donation of muffins for breakfast. Thanks also to Starbuck's at 59th and Union Hills for their donation of two traveler boxes of coffee.

Bravo to Jeanne and Ernie! We loved singing along with you, thank you for the entertainment.

Ways to Help our Chapter

1. Make a blanket out of soft washable fabric or soft acrylic yarn. It can be quilted, sewn, crocheted or knitted, any method is acceptable.
2. Suggested sizes:
 - Premie: 20" x 25" to 30"
 - Baby: 25" x 30" to 35"
 - Child: 35" x 40" to 45"
 - Teen: 40" x 60"
 - Young Adult: 50" x 70"Please, no holiday or religious fabrics
3. Donate materials such as yarn, batting or fabric. Or donate gift cards to fabric and craft stores.*
4. Donate office supplies such as stamps, paper or used printer cartridges.*
5. Monetary donations, if in the form of a check, can be made out to Project Linus .
6. Volunteer time to sew on labels, make quilt kits, help with set up or take down after the Blanket Bees.

* Project Linus is a 501(c)3 organization. All donations are tax deductible and a receipt will be provided upon request.



Upcoming Events:

September Blanket Bee: Used book sale

October Blanket Bee: Blanket Challenge

November Blanket Bee: Pot Luck Lunch

2010 Blanket Bee Schedule

Date	Time	Location
Saturday, September 25	9am – 3pm	FSEC 17621 N 25th Avenue Phoenix (I17 & Bell Road)
Saturday, October 30	9am – 3pm	FSEC 17621 N 25th Avenue Phoenix
Saturday, November 27	9am – 3pm	FSEC 17621 N 25th Avenue Phoenix
No meeting in December		
Saturday, January 29 2011	9am – 3pm	FSEC 17621 N 25th Avenue Phoenix

**Facilities our Chapter delivers to:**

Child Protective Services
 Chrysalis Shelter
 Children's Rehab Services
 Crisis Pregnancy Center
 El Mirage Police Department
 Eve's Place
 Faith House
 Hacienda Skilled Nursing Facility
 Human Resource Training
 Maryvale Hospital ER
 Maryvale Hospital CMAC
 Peoria Police Department
 Phoenix Children's Hospital
 Ronald McDonald House
 St. Joe's Hospital - Pediatric
 St. Joe's Hospital - PICU
 St. Vincent de Paul
 Surprise Police Department
 Thunderbird Hospital - ER
 Thunderbird Hospital - NICU

For Information Please Contact

Eve Buck - Coordinator
Phoenix West Valley Project Linus

re_buck@cox.net
623 572 9365 Home
602 326 1639 Cell

www.prjlinus-phxwestvalley.org

**My heart was thinking of you,
my hands knew what to do.
This blanket grew out of the love
I want to share with you.
I hope it will keep you warm,
and befriend you late at night.
I hope you'll come to love it
And be comforted by its sight.
Let this blanket wrap you in friendship
and cover you in love,
Because this blanket was thinking of you
long before it was even done.**

**A poem for Project Linus
by
Suzanne Gonzalez**



Project Linus West Valley
7717 W. Kimberly Way
Glendale, Arizona 85308

